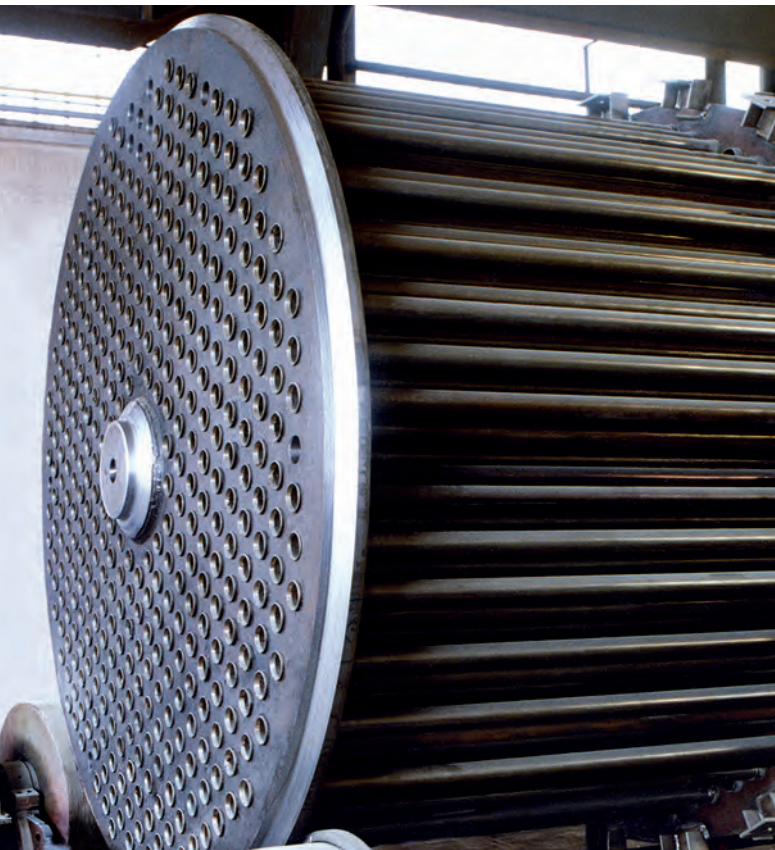


Seamless cold drawn tubes for feedwater heaters



We offer the best benefits to the feedwater heater manufacturers through

Experience

Since over 40 years Salzgitter Mannesmann Precision Etirage has been manufacturing and delivering seamless steel tubes for the most demanding customers. Our tubes are used in thermal power plants and also in nuclear power stations worldwide.

Integration

Our fully integrated process in the Salzgitter Group, from steel making up to finished products, enables to fulfil our high commitments in terms of quality, service and delivery time.

Expertise

Our manufacturing plant of Vitry is certified ISO 9001 and ISO 14001. Our R&D department is specialized in developing specific products and solutions for specific applications.

Our tubes are manufactured according to the main feedwater heater tubes standards such as:

Standards									
EN 10216-2	P 235 GH 1.0345 (1)	P 265 GH 1.0425 (1)		16 Mo3 1.5415 (1)			13 CrMo 4-5 1.7335 (2)	10 CrMo 5-5 1.7338 (2)	10 CrMo 9-10 1.7380 (2)
ASTMA 209					Grade T1/T1A (2)				
ASTMA 210		Grade A1 (1)	Grade C (1)						
ASTMA 213					Grade T2 (2)	Grade T12 (2)	Grade T11 (2)	Grade T22 (2)	Grade T5 (2)
ASTM 556	Grade A2 (1)	Grade B2 (1)	Grade C2 (1)						
JIS 3462	STB 340 (1)			STBA 12 (1)					

(1) Normalised

(2) Normalised and tempered

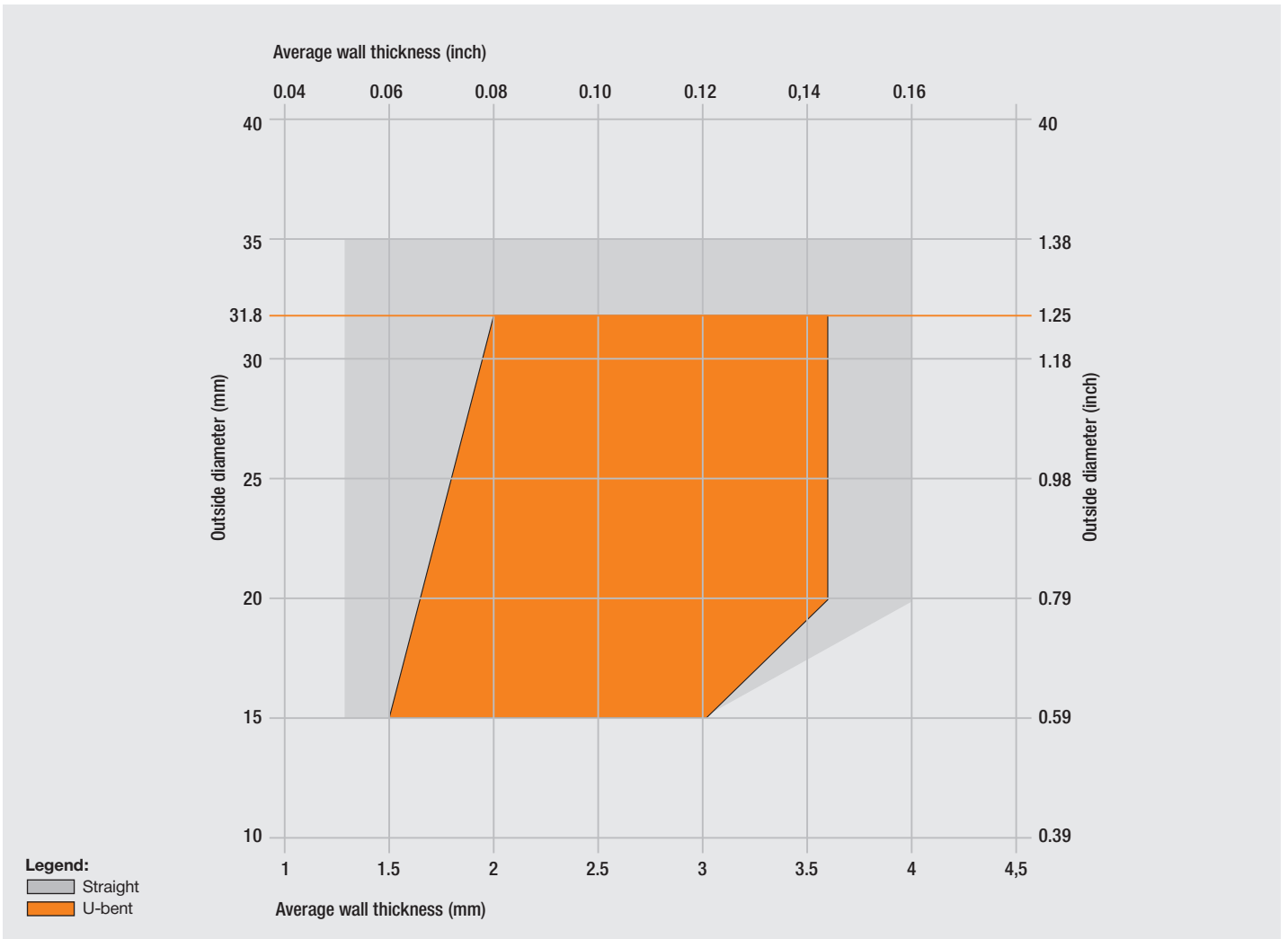
upon request, all these steel grades can be delivered full annealed.

Other grades and standards may be available upon request.



Tubes are manufactured in our plant of Vitry-le-François and cover the widest range. Vitry-le-François is an integrated plant where the tubes are drawn and bent in-house, thus ensuring our

customers a most competitive offer. Our Technical Customer Support (TCS) team is at your disposal for any non standard inquiry.



Maximum lengths

Straight tubes: 24 m (78 ft 8 inch) Other lengths are available upon request

U-bent tubes: 26,5 m (85 ft 11 inch) developed length

Minimum radius 1.5 x OD (below upon inquiry)

Maximum radius 1.25 m / 4 ft 1 inch

Quality

Mill test certificate 3.1, 3.2
Third Part Inspection: Lloyd's, TÜV, VERITAS,..
Marking with ink stenciled on part or full length of tube

NDT and checking

Ultra Sonic testing
Positive Material Identification (PMI)
Tensile test
Eddy Current testing

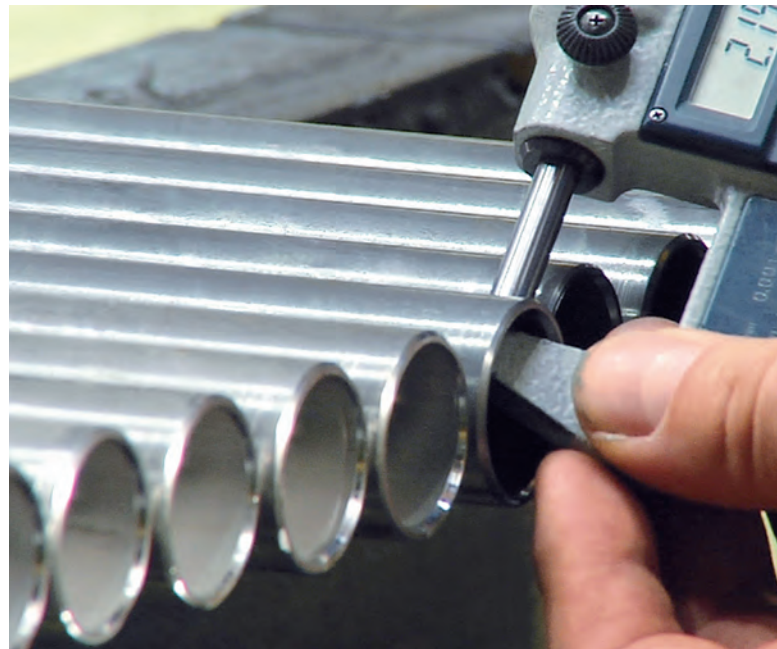
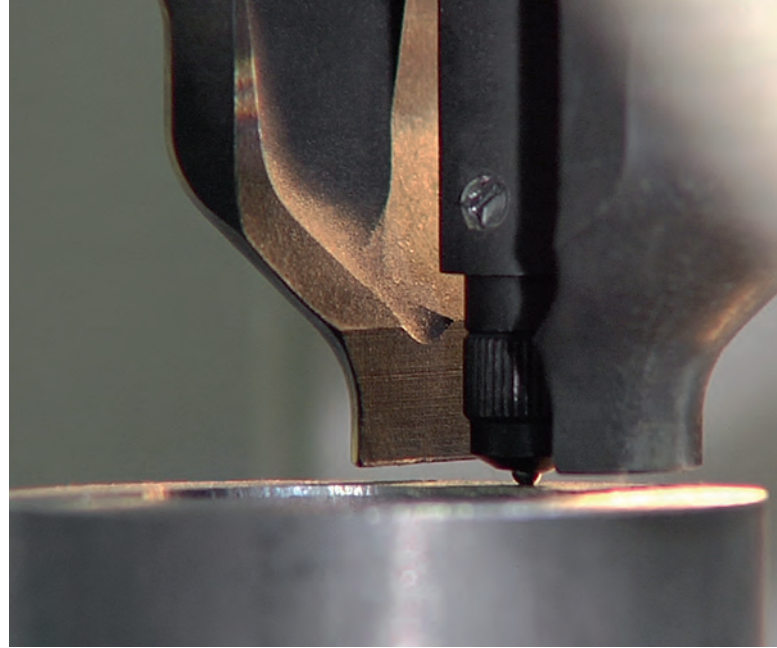
Specific controls upon request:

- Hydrostatic testing
- Magnetoscopic testing
- Wall thickness checking of bent part
- Outside diameter checking and/or gauging
- Inside diameter checking and/or free ball passing (only on mock up tests)
- Out-of-roundness checking on bent part
- PWHT,
- Hot tensile test
- Impact test
- Hardness test
- Flattening test
- Flaring test
- Flange test
- Micrographic inspection

Packaging and shipment

SMP has set a world standard packaging to ensure quality of the tubes up to our customer's workshop whatever the distance. We offer sea proof wooden boxes, wooden frame or bundles. In case of wooden boxes, tubes are wrapped into a thermo welded cover to guaranty rust protection.

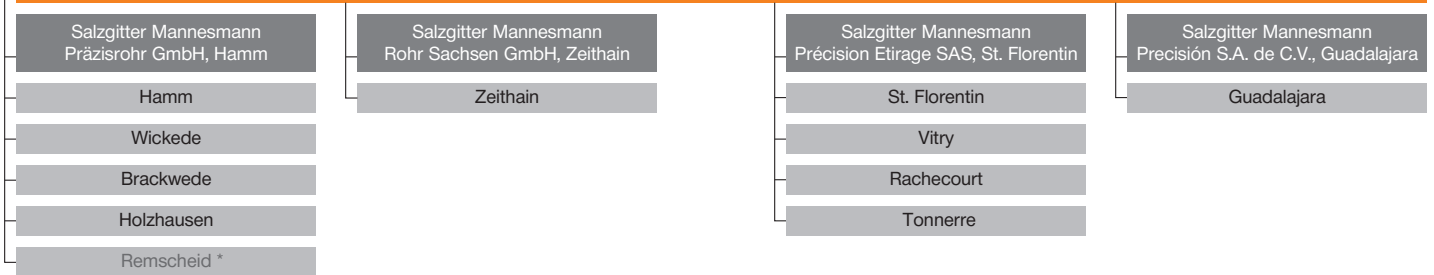
Shipments can be made worldwide either by rail, road and/or sea.



Salzgitter AG

Mannesmannröhren-Werke GmbH

Salzgitter Mannesmann Precision GmbH



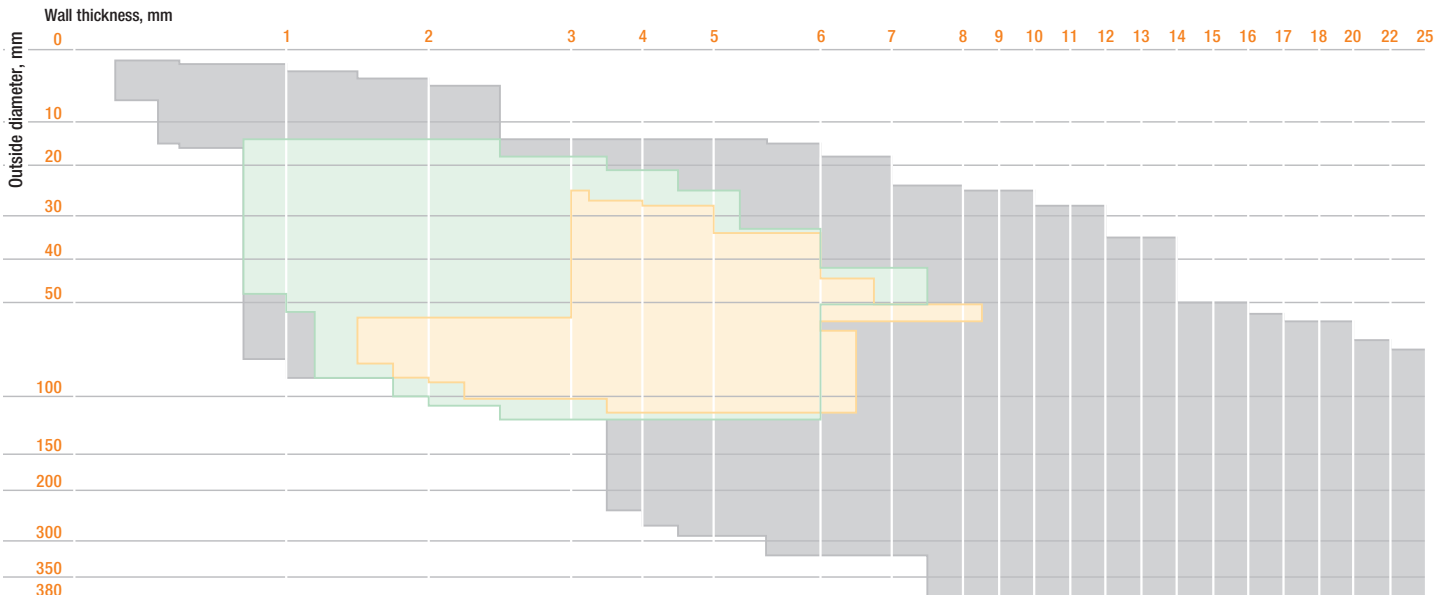
*A Company of Salzgitter Mannesmann Stainless Tubes GmbH

Salzgitter Mannesmann Precision

Following the takeover of Vallourec Précision Etrage (VPE), France, by the Salzgitter AG, the new European market leader of cold-drawn seamless and welded precision steel tubes has been founded under the name of Salzgitter Mannesmann Precision GmbH. As a leading European manufacturer Salzgitter Mannesmann Precision offers a wide range of products and services with great scope for intelligent, tubing-related solutions.

The Group-Structure

Effective synergies are a result of our integration with the Salzgitter Group ensure an outstanding efficiency - from the pre-material to the finished precision steel tube. The affiliated group companies ensure a comprehensive supply guarantee regarding the complete value-added chain in production of precision steel tubes and is therewith the basis for the high performance in deliveries and customer satisfaction. Today, Mannesmannröhren-Werke (MRW) manages the Group's Tube Division. The Division has numerous subsidiaries and affiliated companies.



Production of seamless and welded precision steel tubes in accordance to international standards e.g. EN 10305-1, EN10305-2, EN10305-3, EN 10305-4, EN10216 and EN10217, ASTM A 179, A192, A 209, A 210, A 213, A 556 Japan Industrial Standard, British Standards, Other standards on inquiry.

Seamless precision steel tubes of special dimensional accuracy according to DIN EN 10305-1 Outside diameter: 1.5 - 380 mm Wall thicknesses: 0.2 - 25.0 mm	Welded precision steel tubes of special dimensional accuracy according to DIN EN 10305-2 Outside diameter: 20 - 120 mm Wall thicknesses: 1.0 - 7.5 mm	Welded size-rolled precision steel tubes according to DIN EN 10305-3 Outside diameter: 25 - 114.3 mm Wall thicknesses: 1.75 - 8.5 mm
--	--	---

Salzgitter Mannesmann Precision Etirage SAS

Direct Contact Sales:

Avenue Jean Juif

BP 77 – Z.I.

51300 Vitry-le-François, France

Phone: +33 3 26 41 23 97

Fax: +33 3 26 41 23 32

E-mail: marketing@smp-tubes.fr

Salzgitter Mannesmann Precision GmbH

Wiesenstraße 36

45473 Mülheim/Ruhr, Germany

www.smp-tubes.com

Your local contact:

